



2023

ANNUAL REPORT



TABLE OF CONTENT

A WORD FROM THE PRESIDENCY

OUR COMMITTEES

MISSION AND VISION

2023 IN SUMMARY

KEY PARTNERS

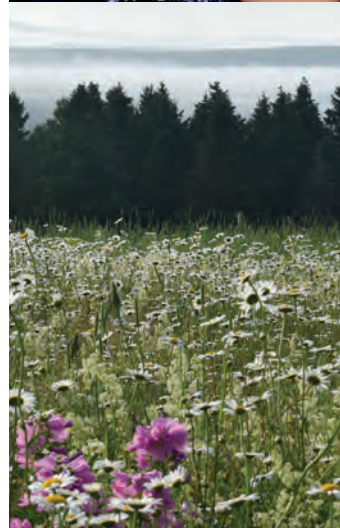
ORGANIZATIONS AND PROJECTS SUPPORTED

- ATHLETIC AND ACADEMIC STUDIES
- SOCIAL INITIATIVES
- AWARENESS PROGRAMS
- VALUES AND TRADITIONS

DONORS

ANNUAL GOLF TOURNAMENT

FINANCIAL DATA



A WORD FROM THE PRESIDENCY

Dear readers and partners,

It is our great pleasure to share with you the achievements of your Foundation in 2023.

From the beginning, the administrators wished to be directly involved with the communities to improve the life conditions and the well-being of First Nations. As you may know, the socio-economic conditions of First Nations living either in communities or in urban settings are alarming and very relevant.

Every year, we support multiple organizations and projects devoted to the well-being of First Nations. We have proudly contributed over \$885,000 in projects and initiatives dedicated to the life conditions of our members since we started.

In 2023, the Foundation was able to provide financial support to 32 First Nations projects, giving a total amount of \$83,000. Many projects were supported, education and training programs were established, and investments were made in various fields, mainly in suicide prevention, consumption and in the status of women thanks to the financial support of our Foundation.

The generous contributions of our partners helped feed more than 5,000 elementary students and helped promote the culture, the art, the values, and the traditions of First Nations.

As you read, you will be able to see that we have worked very hard to be actively involved in the well-being of our communities.

There is no doubt that the next few years are promising, all thanks to your support. Together we can make a bigger difference and with your financial support, we will be able to do so.

We are grateful to have partners and members who are involved, who believe in our mission and who support us every year.

On our behalf, and on behalf of everyone directly and indirectly affected by the projects and organizations, thank you!



SYLVAIN PICARD.
EXECUTIVE DIRECTOR

A handwritten signature in black ink that reads "Sylvain Picard".



DANIEL G. NOLETT
RETIREMENT COMMITTEE PRESIDENT

A handwritten signature in black ink that reads "Daniel G. Nolett".

OUR COMMITTEES

The committee members, all from First Nations, sit on the different RBA Financial Group committees. They all voluntarily participate for the well-being of our members and communities.



BOARD OF DIRECTORS

Daniel G. Nolett | President

Norm Odjick | Vice-president

Jean Ross | Administrator

Johanne Castonguay | Administrator

Olivier Gill-Sioui | Administrator

Valérie Tremblay | Administrator

Jinny Thibodeau Rankin | Administrator

Michel Toupin | Administrator

Jacques Beaudet | Secretary



DONATION COMMITTEE

Daniel G. Nolett | Member

Jinny Thibodeau Rankin | Member

Olivier Gill-Sioui | Member

Jacques Beaudet | Member



MANAGEMENT

Graciously done by the RBA Financial Group and the Native Benefits Plan (NBP) team

MISSION AND VISION

OUR MISSION

CONTRIBUTE TO THE WELL-BEING OF FIRST NATIONS

OUR VISION

THROUGH DONATIONS, THE RBA FOUNDATION SUPPORTS:

ATHLETIC AND ACADEMIC STUDIES

Support First Nations students to undertake and pursue studies by giving out scholarships, athletic or academic scholarships or by providing financial support.

SOCIAL INITIATIVES

Support the different social and community initiatives focused on improving the living situation and the well-being of people in Indigenous communities especially the youth, the women, and the seniors.

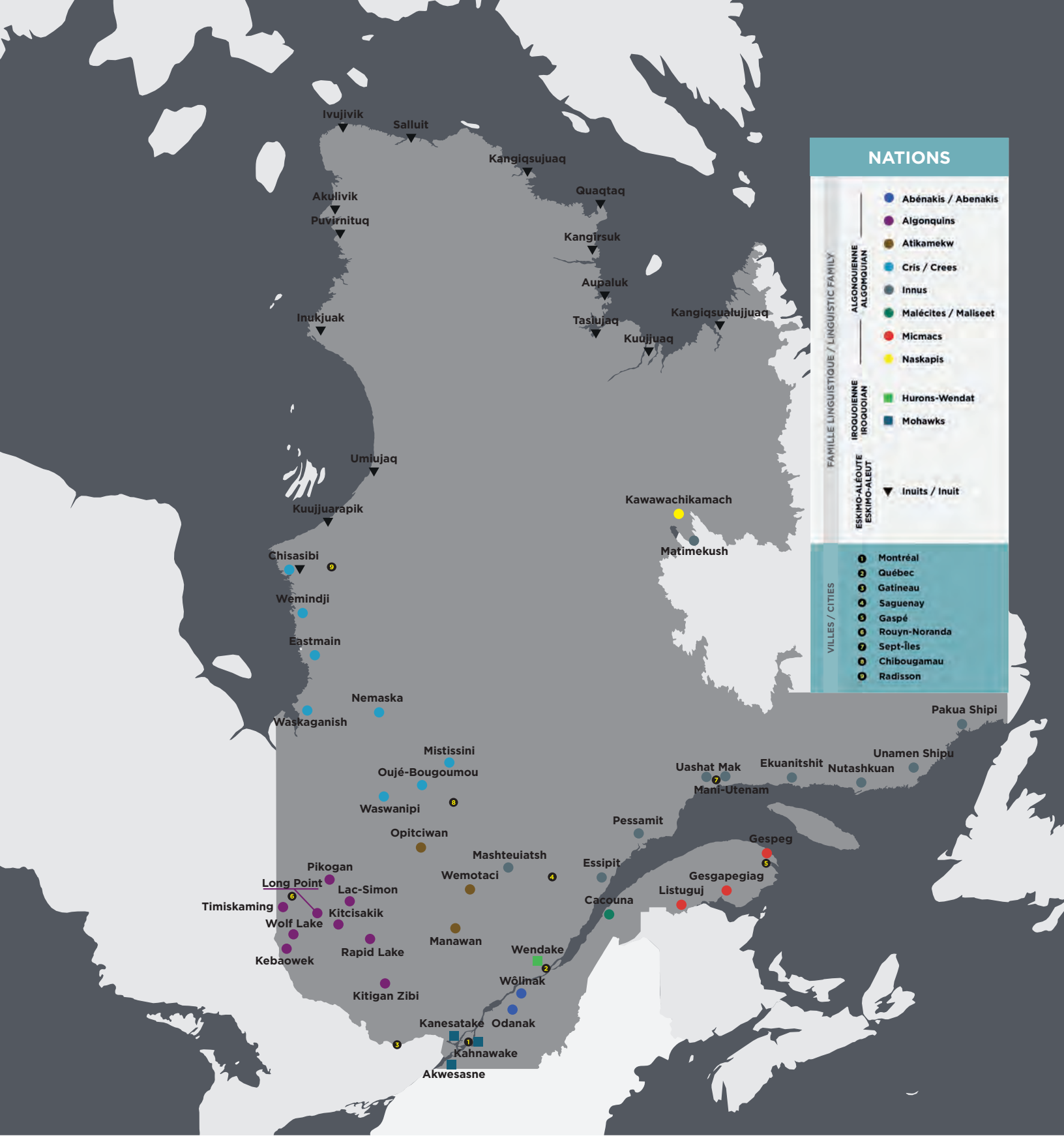
AWARENESS PROGRAMS

Support and promote the development and strengthening of awareness, intervention and mobilization programs made by and for Indigenous people.

VALUES AND TRADITIONS

Promote Indigenous values and traditions to all communities.





“ LET’S CONTRIBUTE TO THE WELL-BEING OF FIRST NATIONS ”

SINCE 2012,
THE RBA FOUNDATION IS:

\$885,820
in donations

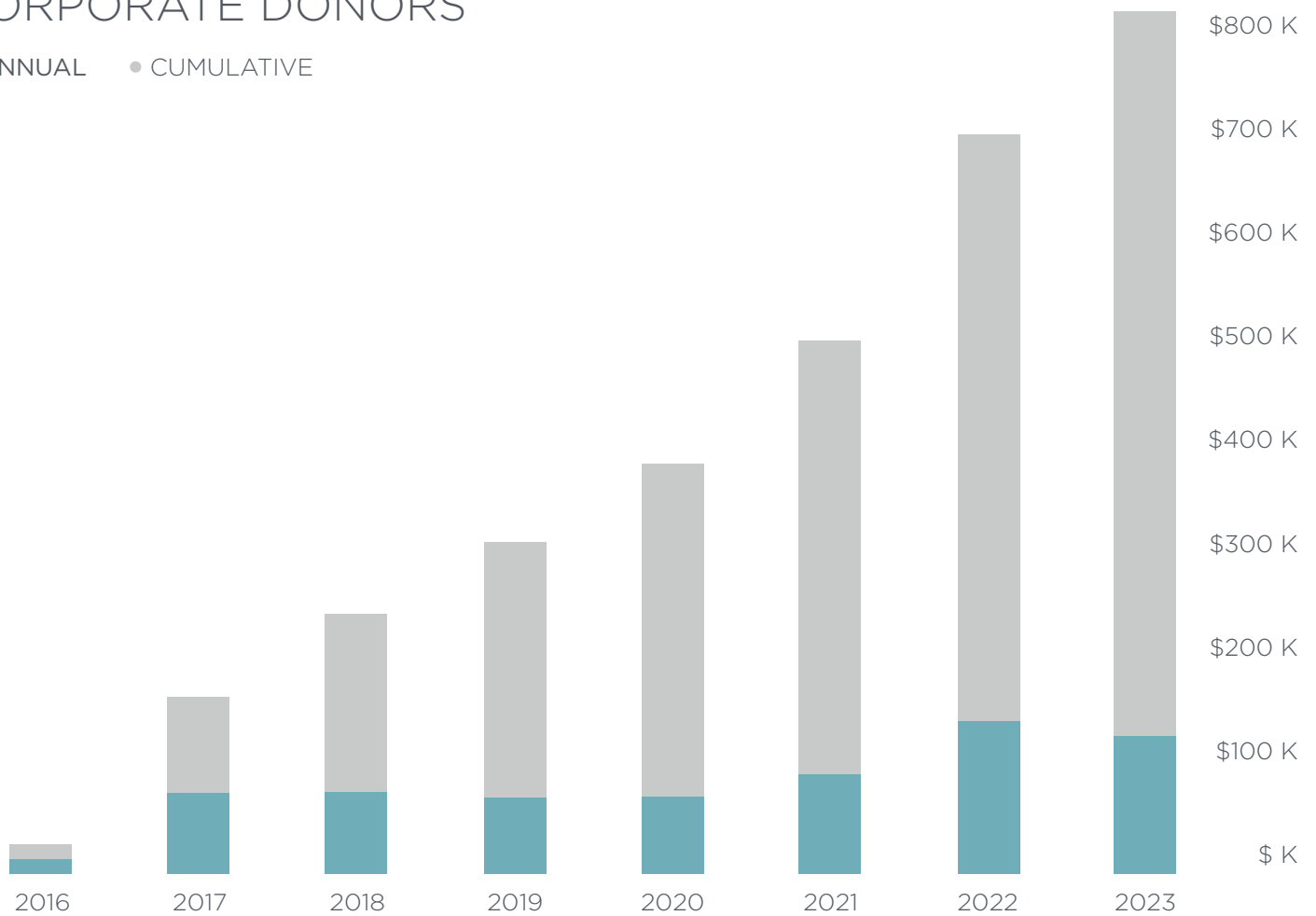
40
charitable
organizations

Average of
26
projects
supported
yearly

Average of
\$73,902
donated
yearly

EVOLUTION OF DONATIONS RECEIVED
CORPORATE DONORS

● ANNUAL ● CUMULATIVE



SINCE 2012, THE RBA FOUNDATION IS ALSO:

\$147,740

in donations to organizations working in suicide prevention and awareness

\$351,700

donated to financially support projects relating to children's health, education, activities and well-being

\$173,500

put towards Native culture and values, a central part of the First Nations of Quebec's heritage

\$14,000

invested in our elder's health and well-being

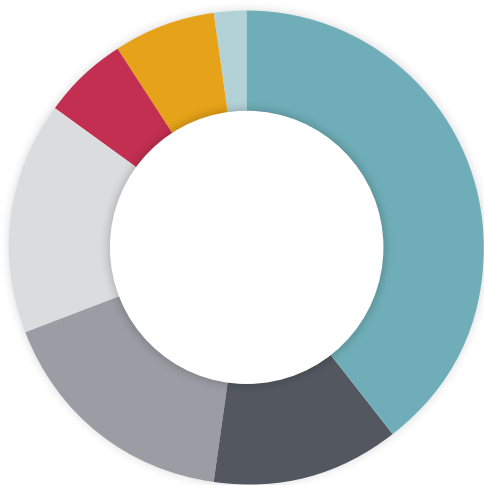
\$137,985

put into aid projects over the last 10 years

\$60,500

donated to support the status of women

BREAKDOWN OF DONATIONS BY FIELD OF INTERVENTION



- 40% | YOUTH
- 13% | VALUES AND TRADITIONS
- 17% | SUICIDE PREVENTION
- 16% | AID
- 6% | CULTURE
- 7% | WOMEN
- 2% | ELDERS

2023 IN SUMMARY

OVER
\$83,395
DONATED

31
CORPORATE
DONORS

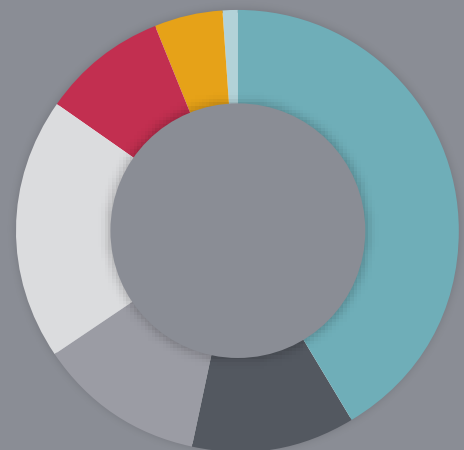
32
PROJECTS
SUPPORTED

11 DAYS of seminars regarding intergenerational trauma, addiction and suicide prevention hosted by the FNISPAQ, a key partner of the RBA Foundation since 2013.

40 YOUNG PEOPLE were offered direct support through the BECOME project from the New Pathways Foundation.

1 NEW PROGRAM created, and 3 additional communities reached by our key partner Breakfast Club of Canada. In total, it means 65 schools in 28 First Nations' communities are reached.

BREAKDOWN OF DONATIONS BY FIELD OF INTERVENTION





OUR KEY PARTNERS

FIRST NATIONS AND INUIT SUICIDE PREVENTION ASSOCIATION OF QUEBEC AND LABRADOR (FNISPAQ)

The FNISPAQ is an Aboriginal organization established about 20 years ago. Its mission is to contribute to the well-being and balance of the lives of Indigenous people of Quebec through community activities such as awareness, prevention, and education. The Association brings together front-line workers often isolated and dealing with complex community realities and works to ensure access to psychosocial interventions in the language and the cultural context of each community.



© Breakfast Club of Canada

BREAKFAST CLUB OF CANADA

Since 1994, Breakfast Club of Canada has been nourishing children’s potential by ensuring they have access to a healthy breakfast at school in a welcoming and inclusive environment. The Club is constantly on the lookout for sustainable ways of reaching out to more children in Indigenous communities to support community empowerment by opting for culturally and nutritionally appropriate food. The Club supports innovative, holistic approaches. They also track, record, and share progress, challenges and successes as well as engage the philanthropic community.



© FNISPAQ





© New Pathways Foundation

NEW PATHWAYS FOUNDATION

Founded in 2010 by First Nations for the benefit of their youth, the New Pathways Foundation works for the future and the well-being of First Nations youth in Quebec. The Foundations' mission is to help young people reach their full potential and be confident in a better future through a strong identity. Whether on or off the community, the New Pathways Foundation creates positive hands-on experiences that reflect First Nations' youth.



© Innu Meshkenu

PUAMUN MESHKENU

Puamun Meshkenu is an organization working to develop the full potential of Indigenous people by promoting the concepts of holistic health, student retention and Aboriginal identity. The organization, founded by Dr. Stanley Vollant in 2016, launches projects that will have lasting impacts on many First Nations children and structuring effects across Aboriginal communities in Quebec.

ATHLETIC AND ACADEMIC STUDIES



NEW PATHWAYS FOUNDATION
BECOME



© New Pathways Foundation

CENTRE D'AMITIÉ AUTOCHTONE
DE LA TUQUE
RECOGNITION GALA

CENTRE DES PREMIÈRES NATIONS
NIKANITE
EMERGENCY FUND

PUAKUTEU COMITÉ DES FEMMES
DE MASHTEUIATSH
EXPLORE NEW YORK



© New Pathways Foundation



© New Pathways Foundation

SOCIAL INITIATIVES



BREAKFAST CLUB OF CANADA
**SUPPORT THE NEEDS OF
INDIGENOUS COMMUNITIES**

PUAMUN MESHKENU
DEVELOPMENT OF FULL POTENTIAL

CENTRE D'AMITIÉ AUTOCHTONE
DE LANAUDIÈRE
**CHRISTMAS PARTY FOR
THE MEMBERS**

COMPTOIR AGOSHIN
CHRISTMAS FOOD BASKETS 2023

FONDATION MARCEL SIOUI
WENDAKE HOUSING FOUNDATION

I LOVE FIRST PEOPLES
SEW & SEW SKILLS LABS

JEUNES MUSICIENS DU MONDE
INSTRUMENT CLASSES

KATERI MEMORIAL FOUNDATION
**DIGITAL WORKPLACE
MODERNIZATION**

STEP BY STEP
KAKHWÀKON

VUES ET VOIX
KWE, BONJOUR



© Jeunes Musiciens du Monde



© Breakfast Club of Canada

AWARENESS PROGRAMS



FNISPAQL
DIALOGUE FOR LIFE



© Val D'or Native Friendship Centre

VAL D'OR NATIVE
FRIENDSHIP CENTRE
24TH ACTION WEEK AGAINST RACISM

ISUARSIVIK REGIONAL
RECOVERY CENTRE
PINGGUPAA CHALLENGE TOUR

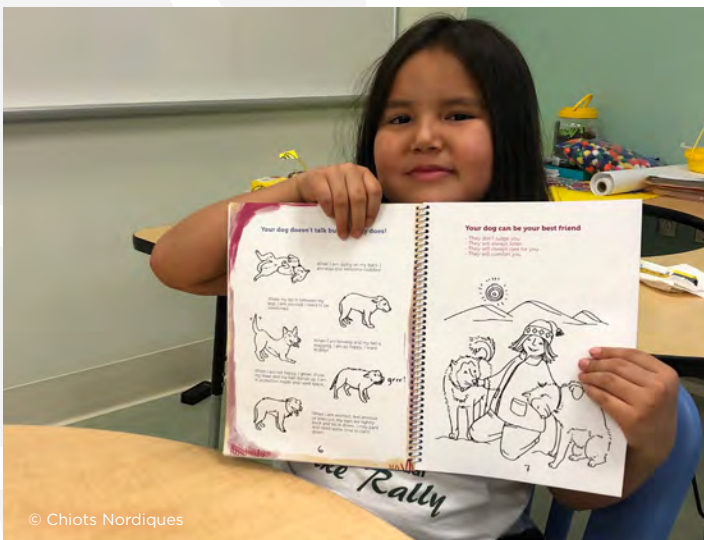
CHIOTS NORDIQUES
**OUTREACH AND EDUCATION
PROGRAM**

EXEKO
TRICKSTER AND IDACTION 2024-25

QUEBEC NATIVE WOMEN
**MOBILIZATION FINANCIAL
SUPPORT**

JUSTICE MONTRÉAL
**COMMUNITY HEALING:
CULTURALLY SAFE COUNSELING
AND ACTIVITIES**

KINASAT
EAGLE QUETZAL CONDOR SUMMIT



© Chiots Nordiques

VALUES AND TRADITIONS

BOÎTE ROUGE VIF
**ART CENTRE FOR EMERGING
NATIVE ARTISTS**

CENTRE D'ENTRAIDE ET D'AMITIÉ
AUTOCHTONE DE SENNETERRE
**THE DEVELOPING RIVER
OF KNOWLEDGE**

FIRST PEOPLES
INNOVATION CENTRE
**ONAKI CIRCLES - SHARE
AND COOPERATE**

CORPORATION DU MUSÉE DE
LA NATION HURONNE-WENDAT
WENDAT ENDI'

EENOUEEYOU COMMUNITY
FOUNDATION
**AANISCHAAUKAMIKW ANNUAL
FUND**

MAISON COMMUNAUTAIRE
MISSINAK
MITESH CIRCLE ARTISANSHIP



SOCIÉTÉ HISTORIQUE
D'ODANAK - MUSÉE DES
ABÉNAKIS

**EDUCATION PROGRAM -
EDUCATIONAL KIT**

WAPIKONI MOBILE
**SUPPORT FOR THE PROMOTION
AND VISIBILITY OF ARTISTS
AND THEIR WORK**

ANNUAL GOLF TOURNAMENT

We are pleased to announce that in its 28th year, the Golf Classic RBA raised funds to support over twenty organizations working towards the well-being of First Nations in Quebec communities.

There were 140 registered players and an additional 30 people who joined us for dinner. This event is an important annual fundraiser for the RBA Foundation. It is a wonderful opportunity to spend the day with our sponsors, clients, organizations, employees and partners.

During the event, we were able to give our annual contributions to our 4 key partners: New Pathways Foundation, Puamun Meshkenu, Breakfast Club of Canada and First Nations and Inuit Suicide Prevention Association of Quebec and Labrador.

Many thanks to everyone who helped make this event a success!



PUAMUN MESHKENU



**NEW PATHWAYS
FOUNDATION**



**BREAKFAST CLUB
OF CANADA**



**FIRST NATIONS AND INUIT
SUICIDE PREVENTION
ASSOCIATION OF QUEBEC
AND LABRADOR**



CORPORATE DONORS

We wish to thank every member of our communities as well as our corporate donors for their generous donations every year. Your contribution and engagement are not taken for granted.

PARTNER \$20,000 OR MORE

Fiera Capital Corporation is an independent asset management firm with a growing global presence. Fiera Capital Corporation collaborates and seeks to draw on the global industry's most innovative and diverse offerings to craft strategies that meet the needs of every client, anywhere in the world.

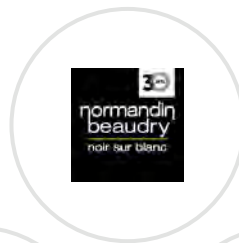


AMBASSADOR \$10,000 TO \$19,999

RBC believes in helping clients thrive and communities prosper, they support strategic initiatives that have important impact on society, environment and economy.



BUILDER \$5,000 TO \$9,999





COLLABORATOR \$2,500 TO \$4,999

- AlphaFixe Capital
- Beneva
- First Nations Executive Education
- ITUM
- J.P. Morgan Asset Management (Canada) Inc.
- Raymond Chabot Grant Thornton



SCOUT \$2,499 OR LESS

- Canadian Online Giving Foundation
- Corporation de Développement Économique Montagnaise
- First Nations of Quebec and Labrador Economic Development Commission
- Radio CKAU
- Conseil de la Nation Atikamekw
- Conseil des Abénakis d'Odanak
- Fidelity Investment Canada
- Gagné Letarte
- IFM Investors
- Grand Royal Wôlinak Casino
- Lussier
- Neuberger Berman
- SOCCA - ABSBAN
- Triomphe marketing
- Van Berkom

**THANK YOU TO OUR
INDIVIDUAL DONORS**

**FOR MORE INFORMATION
CONTACT**

The Foundation Team

418-847-1840 ext. 120

1-888-242-0277 ext. 120

fondation@rbagroupefinancier.com

RBA FOUNDATION

2936 rue de la Faune, Suite 202

Wendake (Québec) G0A 4V0

rbagroupefinancier.com/en/foundation



FONDATION
RBA
FOUNDATION